

Hampshire Water Transfer and Water Recycling Project Environmental Statement - Figure 16.2 Mineral constraints

VOLUME NUMBER: 6

PLANNING INSPECTORATE SCHEME NUMBER: WA010002

APPLICATION DOCUMENT REFERENCE: 6.3

APFP REGULATION: 5(2)(a)

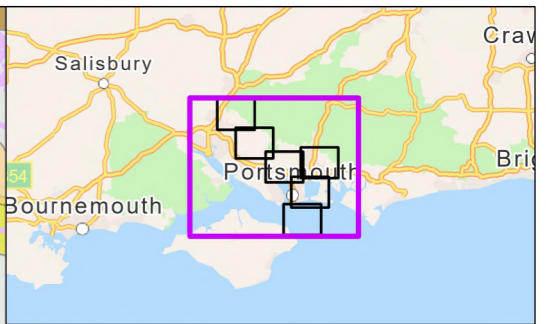
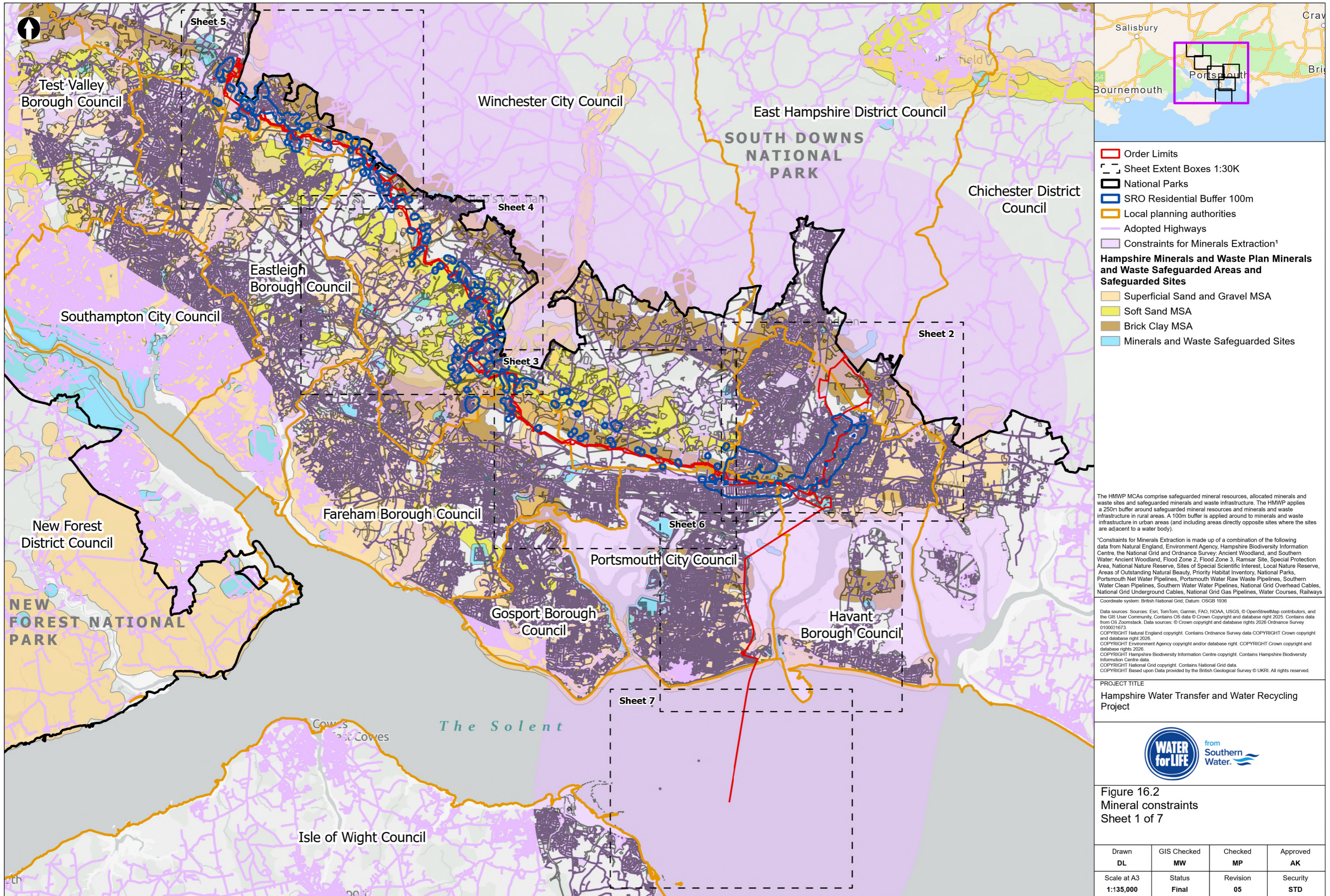
May 2026

Version 0



from
**Southern
Water** 

The Southern Water logo consists of the words 'Southern' and 'Water' stacked vertically in a bold, blue, sans-serif font. To the right of the text is a graphic element of three stylized, wavy blue lines representing water.



- Order Limits
- Sheet Extent Boxes 1:30K
- National Parks
- SRO Residential Buffer 100m
- Local planning authorities
- Adopted Highways
- Constraints for Minerals Extraction¹
- Superficial Sand and Gravel MSA
- Soft Sand MSA
- Brick Clay MSA
- Minerals and Waste Safeguarded Sites

Hampshire Minerals and Waste Plan Minerals and Waste Safeguarded Areas and Safeguarded Sites

The HMWP MCAs comprise safeguarded mineral resources, allocated minerals and waste sites and safeguarded minerals and waste infrastructure. The HMWP applies a 250m buffer around safeguarded mineral resources and minerals and waste infrastructure in rural areas. A 100m buffer is applied around to minerals and waste infrastructure in urban areas (and including areas directly opposite sites where the sites are adjacent to a water body).

¹Constraints for Minerals Extraction is made up of a combination of the following data from Natural England, Environment Agency, Hampshire Biodiversity Information Centre, the National Grid and Ordnance Survey: Ancient Woodland, and Southern Water: Ancient Woodland, Flood Zone 2, Flood Zone 3, Ramsar Site, Special Protection Area, National Nature Reserve, Sites of Special Scientific Interest, Local Nature Reserve, Areas of Outstanding Natural Beauty, Priority Habitat Inventory, National Parks, Portsmouth Net Water Pipelines, Portsmouth Water Raw Waste Pipelines, Southern Water Clean Pipelines, Southern Water Water Pipelines, National Grid Overhead Cables, National Grid Underground Cables, National Grid Gas Pipelines, Water Courses, Railways

Coordinate system: British National Grid; Datum: OSGB 1936

Data sources: Sources: Esri, TomTom, Garmin, FAO, NOAA, USGS, © OpenStreetMap contributors, and the GIS User Community, Contains OS data © Crown Copyright and database right 2025, Contains data from OS Zoomstack, Data sources: © Crown copyright and database rights 2025 Ordnance Survey 01000:1673.

COPYRIGHT Natural England copyright. Contains Ordnance Survey data COPYRIGHT Crown copyright and database right 2026.

COPYRIGHT Environment Agency copyright and/or database right. COPYRIGHT Crown copyright and database rights 2026.

COPYRIGHT Hampshire Biodiversity Information Centre copyright. Contains Hampshire Biodiversity Information Centre data.

COPYRIGHT National Grid copyright. Contains National Grid data.

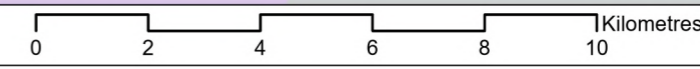
COPYRIGHT Based upon Data provided by the British Geological Survey © UKRI. All rights reserved.

PROJECT TITLE
Hampshire Water Transfer and Water Recycling Project

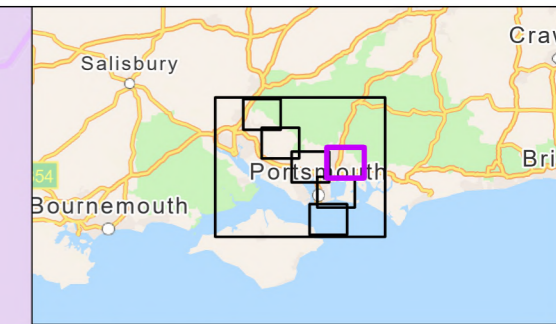
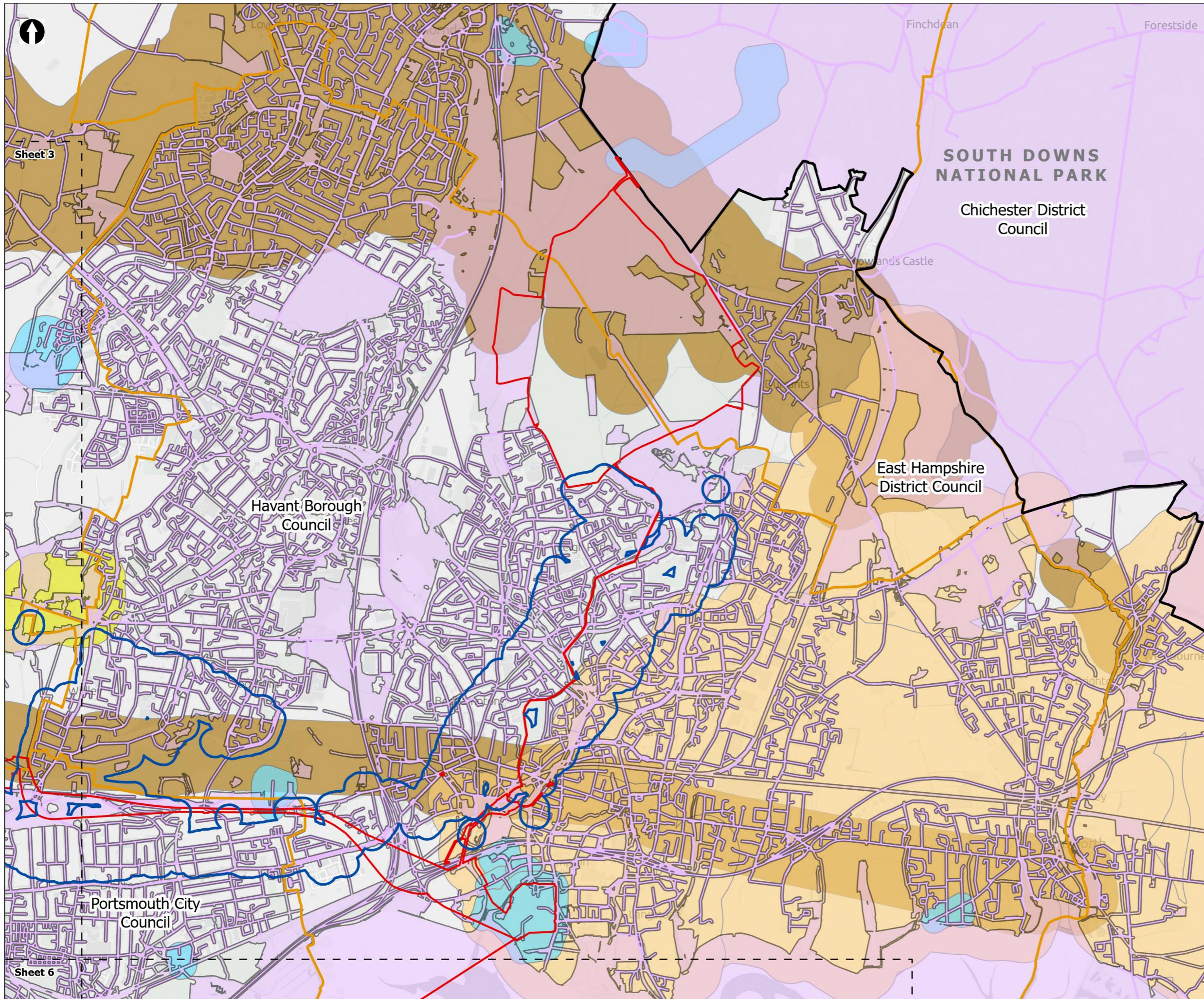


Figure 16.2
Mineral constraints
Sheet 1 of 7

Drawn DL	GIS Checked MW	Checked MP	Approved AK
Scale at A3 1:135,000	Status Final	Revision 05	Security STD



Drawing Number
PC5223-RHD-ES-ZZ-D-Z-0016



- Order Limits
 - Sheet Extent Boxes 1:30K
 - National Parks
 - SRO Residential Buffer 100m
 - Local planning authorities
 - Adopted Highways
 - Constraints for Minerals Extraction¹
- Hampshire Minerals and Waste Plan Minerals and Waste Safeguarded Areas and Safeguarded Sites**
- Superficial Sand and Gravel MSA
 - Soft Sand MSA
 - Brick Clay MSA
 - Minerals and Waste Safeguarded Sites

The HMWP MCAs comprise safeguarded mineral resources, allocated minerals and waste sites and safeguarded minerals and waste infrastructure. The HMWP applies a 250m buffer around safeguarded mineral resources and minerals and waste infrastructure in rural areas. A 100m buffer is applied around to minerals and waste infrastructure in urban areas (and including areas directly opposite sites where the sites are adjacent to a water body).

¹Constraints for Minerals Extraction is made up of a combination of the following data from Natural England, Environment Agency, Hampshire Biodiversity Information Centre, the National Grid and Ordnance Survey: Ancient Woodland, and Southern Water: Ancient Woodland, Flood Zone 2, Flood Zone 3, Ramsar Site, Special Protection Area, National Nature Reserve, Sites of Special Scientific Interest, Local Nature Reserve, Areas of Outstanding Natural Beauty, Priority Habitat Inventory, National Parks, Portsmouth Net Water Pipelines, Portsmouth Water Raw Waste Pipelines, Southern Water Clean Pipelines, Southern Water Water Pipelines, National Grid Overhead Cables, National Grid Underground Cables, National Grid Gas Pipelines, Water Courses, Railways

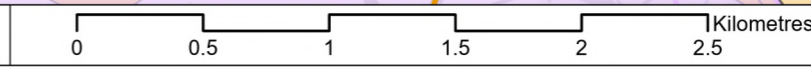
Coordinate system: British National Grid; Datum: OSGB 1936
 Data sources: Sources: Esri, TomTom, Garmin, FAO, NOAA, USGS, © OpenStreetMap contributors, and the GIS User Community, Contains OS data © Crown Copyright and database right 2025, Contains data from OS Zoomstack, Data sources: © Crown copyright and database rights 2025 Ordnance Survey 010001673.
 COPYRIGHT Natural England copyright. Contains Ordnance Survey data COPYRIGHT Crown copyright and database right 2026.
 COPYRIGHT Environment Agency copyright and/or database right. COPYRIGHT Crown copyright and database rights 2026.
 COPYRIGHT Hampshire Biodiversity Information Centre copyright. Contains Hampshire Biodiversity Information Centre data.
 COPYRIGHT National Grid copyright. Contains National Grid data.
 COPYRIGHT Based upon Data provided by the British Geological Survey © UKRI. All rights reserved.

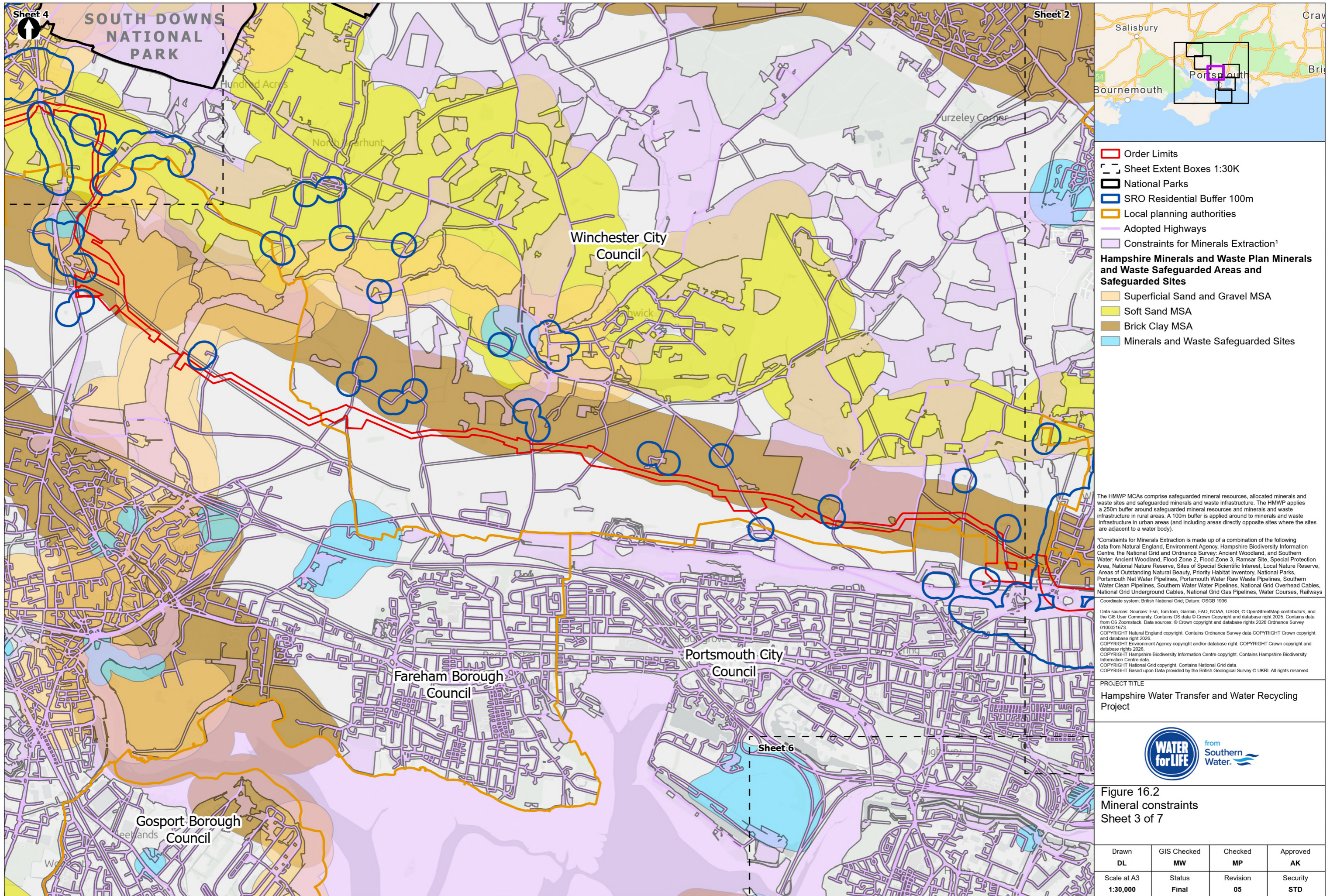
PROJECT TITLE
Hampshire Water Transfer and Water Recycling Project



Figure 16.2
Mineral constraints
 Sheet 2 of 7

Drawn DL	GIS Checked MW	Checked MP	Approved AK
Scale at A3 1:30,000	Status Final	Revision 05	Security STD





The HMWP MCAs comprise safeguarded mineral resources, allocated minerals and waste sites and safeguarded minerals and waste infrastructure. The HMWP applies a 250m buffer around safeguarded mineral resources and minerals and waste infrastructure in rural areas. A 100m buffer is applied around to minerals and waste infrastructure in urban areas (and including areas directly opposite sites where the sites are adjacent to a water body).

¹Constraints for Minerals Extraction is made up of a combination of the following data from Natural England, Environment Agency, Hampshire Biodiversity Information Centre, the National Grid and Ordnance Survey: Ancient Woodland, and Southern Water: Ancient Woodland, Flood Zone 2, Flood Zone 3, Ramsar Site, Special Protection Area, National Nature Reserve, Sites of Special Scientific Interest, Local Nature Reserve, Areas of Outstanding Natural Beauty, Priority Habitat Inventory, National Parks, Portsmouth Net Water Pipelines, Portsmouth Water Raw Waste Pipelines, Southern Water Clean Pipelines, Southern Water Water Pipelines, National Grid Overhead Cables, National Grid Underground Cables, National Grid Gas Pipelines, Water Courses, Railways

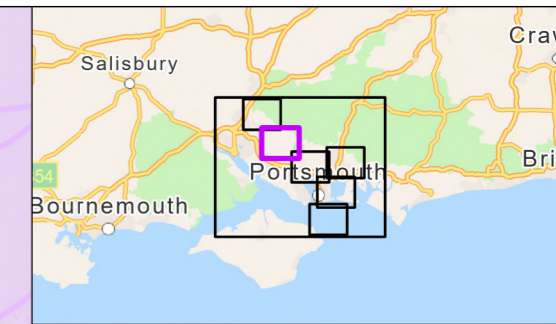
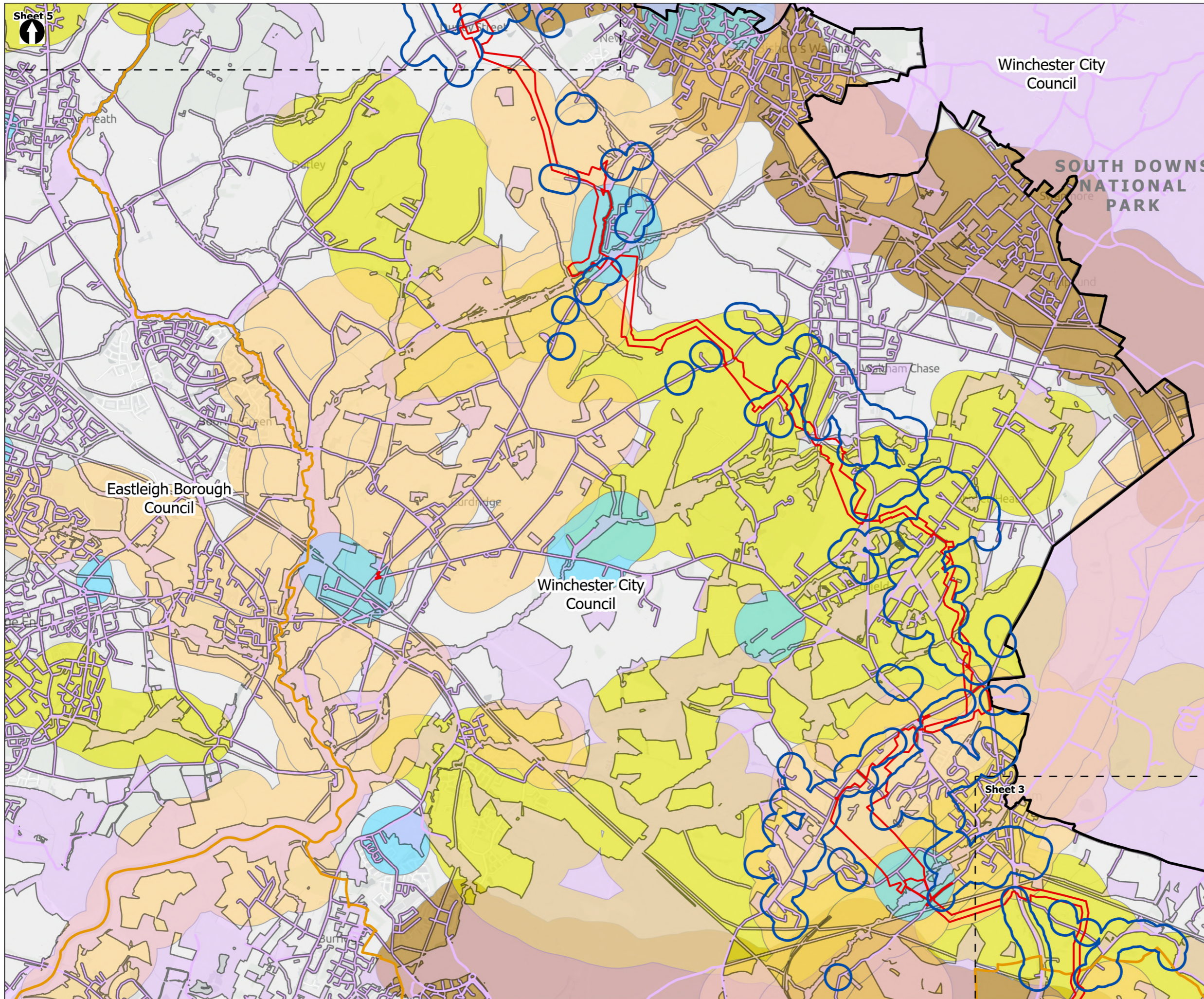
Coordinate system: British National Grid; Datum: OSGB 1936
 Data sources: Sources: Esri, TomTom, Garmin, FAO, NOAA, USGS, © OpenStreetMap contributors, and the GIS User Community, Contains OS data © Crown Copyright and database right 2025. Contains data from OS Zoomstack. Data sources: © Crown copyright and database rights 2026 Ordnance Survey 0100021673.
 COPYRIGHT Natural England copyright. Contains Ordnance Survey data COPYRIGHT Crown copyright and database right 2026.
 COPYRIGHT Environment Agency copyright and/or database right. COPYRIGHT Crown copyright and database rights 2026.
 COPYRIGHT Hampshire Biodiversity Information Centre copyright. Contains Hampshire Biodiversity Information Centre data.
 COPYRIGHT National Grid copyright. Contains National Grid data.
 COPYRIGHT Based upon Data provided by the British Geological Survey © UKRI. All rights reserved.

PROJECT TITLE
 Hampshire Water Transfer and Water Recycling Project



Figure 16.2
 Mineral constraints
 Sheet 3 of 7

Drawn DL	GIS Checked MW	Checked MP	Approved AK
Scale at A3 1:30,000	Status Final	Revision 05	Security STD



- Order Limits
 - Sheet Extent Boxes 1:30K
 - National Parks
 - SRO Residential Buffer 100m
 - Local planning authorities
 - Adopted Highways
 - Constraints for Minerals Extraction¹
- Hampshire Minerals and Waste Plan Minerals and Waste Safeguarded Areas and Safeguarded Sites**
- Superficial Sand and Gravel MSA
 - Soft Sand MSA
 - Brick Clay MSA
 - Minerals and Waste Safeguarded Sites

The HMWP MCAs comprise safeguarded mineral resources, allocated minerals and waste sites and safeguarded minerals and waste infrastructure. The HMWP applies a 250m buffer around safeguarded mineral resources and minerals and waste infrastructure in rural areas. A 100m buffer is applied around to minerals and waste infrastructure in urban areas (and including areas directly opposite sites where the sites are adjacent to a water body).

¹Constraints for Minerals Extraction is made up of a combination of the following data from Natural England, Environment Agency, Hampshire Biodiversity Information Centre, the National Grid and Ordnance Survey: Ancient Woodland, and Southern Water: Ancient Woodland, Flood Zone 2, Flood Zone 3, Ramsar Site, Special Protection Area, National Nature Reserve, Sites of Special Scientific Interest, Local Nature Reserve, Areas of Outstanding Natural Beauty, Priority Habitat Inventory, National Parks, Portsmouth Net Water Pipelines, Portsmouth Water Raw Waste Pipelines, Southern Water Clean Pipelines, Southern Water Water Pipelines, National Grid Overhead Cables, National Grid Underground Cables, National Grid Gas Pipelines, Water Courses, Railways

Coordinate system: British National Grid; Datum: OSGB 1936

Data sources: Sources: Esri, TomTom, Garmin, FAO, NOAA, USGS, © OpenStreetMap contributors, and the GIS User Community, Contains OS data © Crown Copyright and database right 2025. Contains data from OS Zoomstack. Data sources: © Crown copyright and database rights 2026 Ordnance Survey 010001673.

COPYRIGHT Natural England copyright. Contains Ordnance Survey data COPYRIGHT Crown copyright and database right 2026.

COPYRIGHT Environment Agency copyright and/or database right. COPYRIGHT Crown copyright and database rights 2026.

COPYRIGHT Hampshire Biodiversity Information Centre copyright. Contains Hampshire Biodiversity Information Centre data.

COPYRIGHT National Grid copyright. Contains National Grid data.

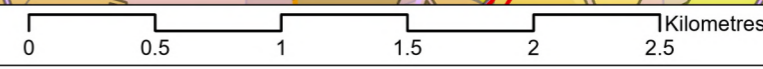
COPYRIGHT Based upon Data provided by the British Geological Survey © UKRI. All rights reserved.

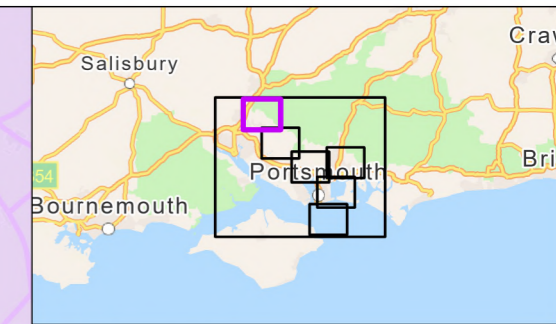
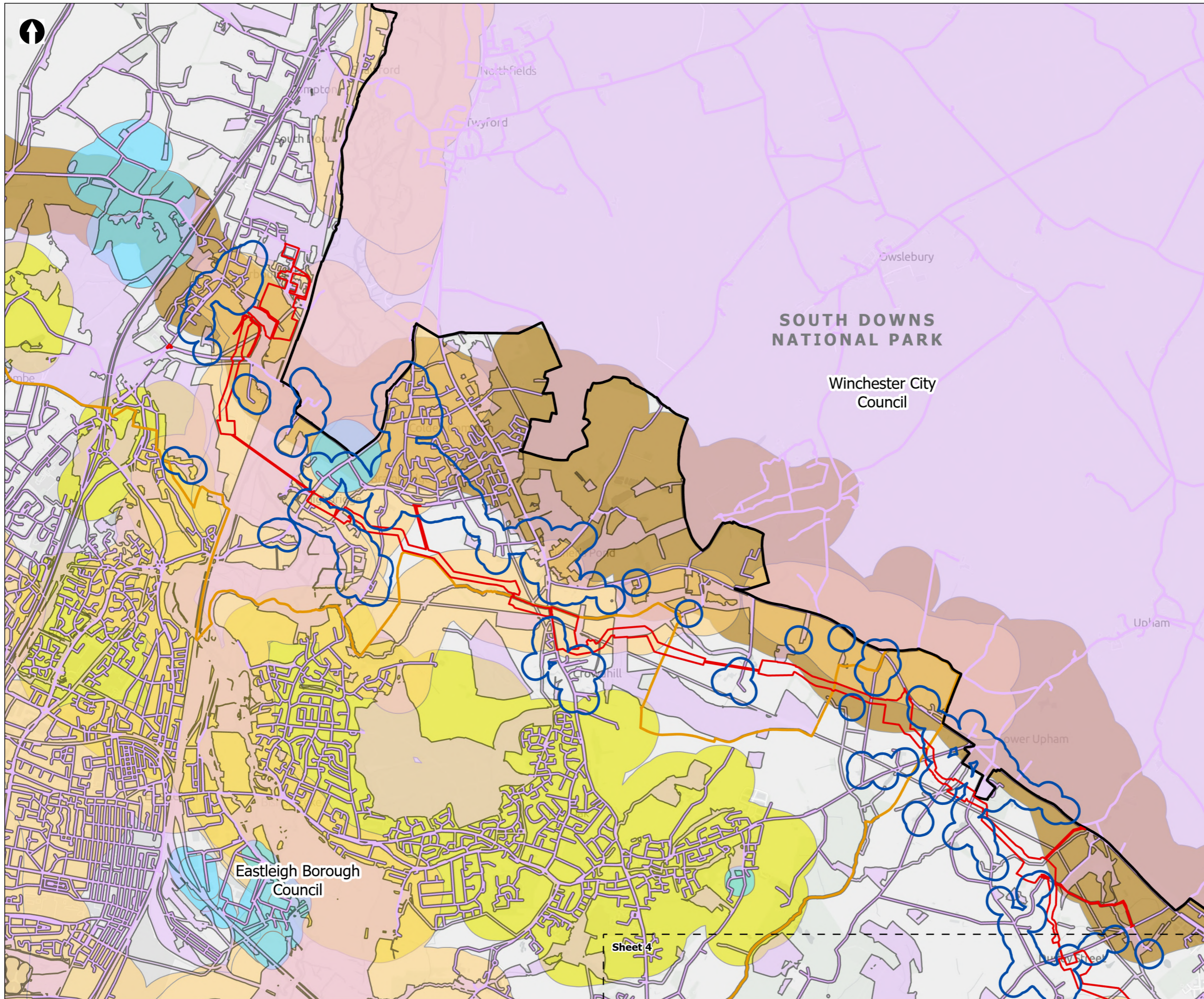
PROJECT TITLE
Hampshire Water Transfer and Water Recycling Project



Figure 16.2
Mineral constraints
Sheet 4 of 7

Drawn DL	GIS Checked MW	Checked MP	Approved AK
Scale at A3 1:30,000	Status Final	Revision 05	Security STD





- ▬ Order Limits
 - Sheet Extent Boxes 1:30K
 - National Parks
 - SRO Residential Buffer 100m
 - Local planning authorities
 - Adopted Highways
 - Constraints for Minerals Extraction¹
- Hampshire Minerals and Waste Plan Minerals and Waste Safeguarded Areas and Safeguarded Sites**
- Superficial Sand and Gravel MSA
 - Soft Sand MSA
 - Brick Clay MSA
 - Minerals and Waste Safeguarded Sites

The HMWP MCAs comprise safeguarded mineral resources, allocated minerals and waste sites and safeguarded minerals and waste infrastructure. The HMWP applies a 250m buffer around safeguarded mineral resources and minerals and waste infrastructure in rural areas. A 100m buffer is applied around to minerals and waste infrastructure in urban areas (and including areas directly opposite sites where the sites are adjacent to a water body).

¹Constraints for Minerals Extraction is made up of a combination of the following data from Natural England, Environment Agency, Hampshire Biodiversity Information Centre, the National Grid and Ordnance Survey: Ancient Woodland, and Southern Water: Ancient Woodland, Flood Zone 2, Flood Zone 3, Ramsar Site, Special Protection Area, National Nature Reserve, Sites of Special Scientific Interest, Local Nature Reserve, Areas of Outstanding Natural Beauty, Priority Habitat Inventory, National Parks, Portsmouth Net Water Pipelines, Portsmouth Water Raw Waste Pipelines, Southern Water Clean Pipelines, Southern Water Water Pipelines, National Grid Overhead Cables, National Grid Underground Cables, National Grid Gas Pipelines, Water Courses, Railways

Coordinate system: British National Grid; Datum: OSGB 1936

Data sources: Sources: Esri, TomTom, Garmin, FAO, NOAA, USGS, © OpenStreetMap contributors, and the GIS User Community, Contains OS data © Crown Copyright and database right 2025, Contains data from OS Zoomstack, Data sources: © Crown copyright and database rights 2025 Ordnance Survey 010001673.

COPYRIGHT Natural England copyright. Contains Ordnance Survey data COPYRIGHT Crown copyright and database right 2026.

COPYRIGHT Environment Agency copyright and/or database right. COPYRIGHT Crown copyright and database rights 2026.

COPYRIGHT Hampshire Biodiversity Information Centre copyright. Contains Hampshire Biodiversity Information Centre data.

COPYRIGHT National Grid copyright. Contains National Grid data.

COPYRIGHT Based upon Data provided by the British Geological Survey © UKRI. All rights reserved.

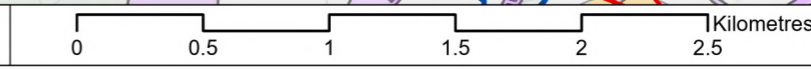
PROJECT TITLE
Hampshire Water Transfer and Water Recycling Project

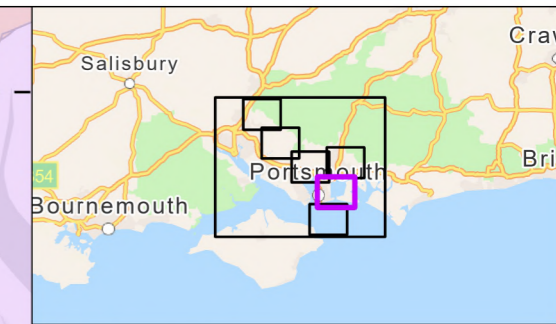
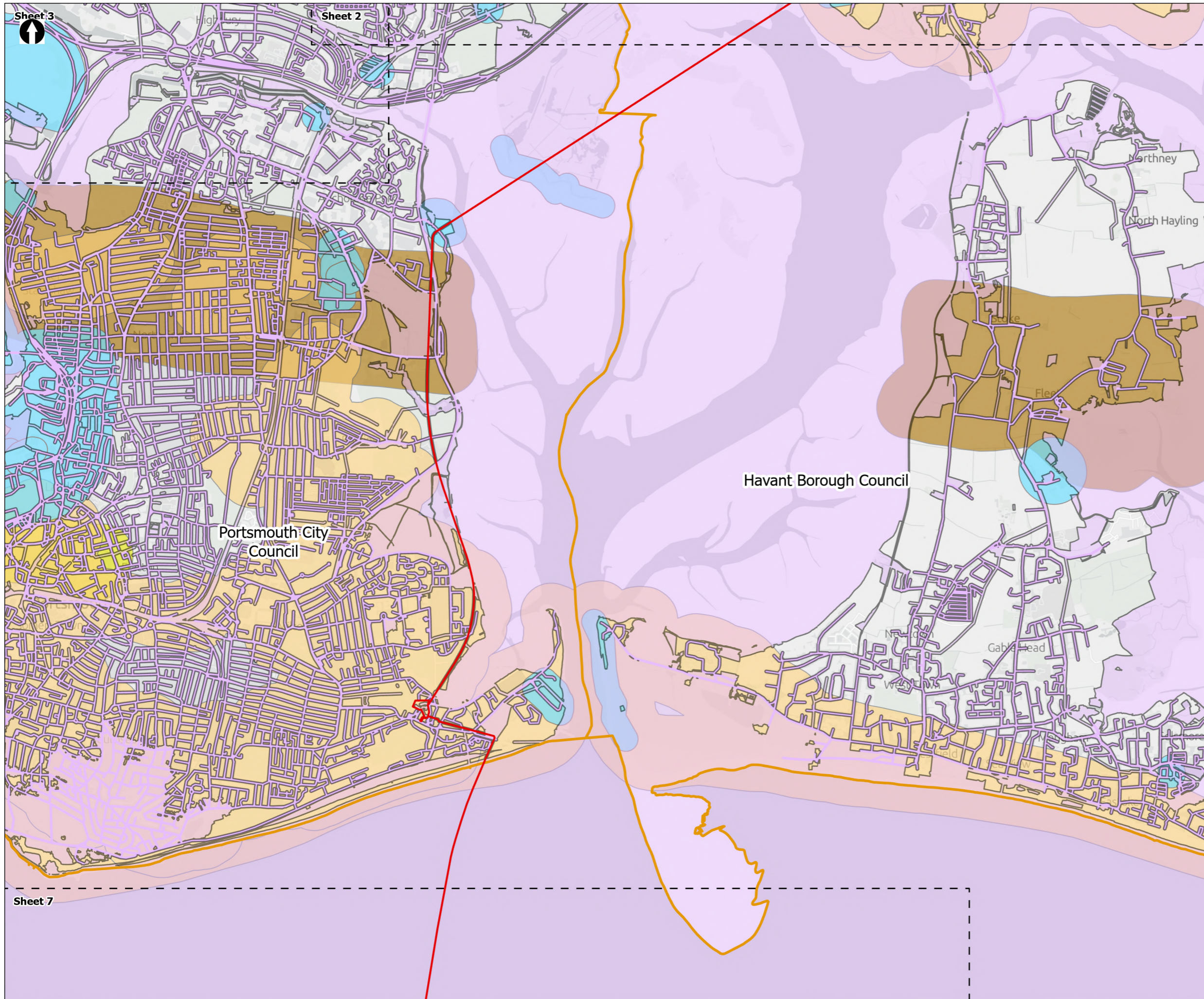


Figure 16.2
Mineral constraints
 Sheet 5 of 7

Drawn DL	GIS Checked MW	Checked MP	Approved AK
Scale at A3 1:30,000	Status Final	Revision 05	Security STD

Drawing Number
PC5223-RHD-ES-ZZ-D-Z-0016





- Order Limits
 - Sheet Extent Boxes 1:30K
 - Local planning authorities
 - Adopted Highways
 - Constraints for Minerals Extraction¹
- Hampshire Minerals and Waste Plan Minerals and Waste Safeguarded Areas and Safeguarded Sites**
- Superficial Sand and Gravel MSA
 - Soft Sand MSA
 - Brick Clay MSA
 - Minerals and Waste Safeguarded Sites

The HMWP MCAs comprise safeguarded mineral resources, allocated minerals and waste sites and safeguarded minerals and waste infrastructure. The HMWP applies a 250m buffer around safeguarded mineral resources and minerals and waste infrastructure in rural areas. A 100m buffer is applied around minerals and waste infrastructure in urban areas (and including areas directly opposite sites where the sites are adjacent to a water body).

¹Constraints for Minerals Extraction is made up of a combination of the following data from Natural England, Environment Agency, Hampshire Biodiversity Information Centre, the National Grid and Ordnance Survey: Ancient Woodland, and Southern Water: Ancient Woodland, Flood Zone 2, Flood Zone 3, Ramsar Site, Special Protection Area, National Nature Reserve, Sites of Special Scientific Interest, Local Nature Reserve, Areas of Outstanding Natural Beauty, Priority Habitat Inventory, National Parks, Portsmouth Net Water Pipelines, Portsmouth Water Raw Waste Pipelines, Southern Water Clean Pipelines, Southern Water Water Pipelines, National Grid Overhead Cables, National Grid Underground Cables, National Grid Gas Pipelines, Water Courses, Railways

Coordinate system: British National Grid; Datum: OSGB 1936
 Data sources: Sources: Esri, TomTom, Garmin, FAO, NOAA, USGS, © OpenStreetMap contributors, and the GIS User Community, Contains OS data © Crown Copyright and database right 2025, Contains data from OS Zoomstack, Data sources: © Crown copyright and database rights 2025 Ordnance Survey 010001673.
 COPYRIGHT Natural England copyright. Contains Ordnance Survey data COPYRIGHT Crown copyright and database right 2026.
 COPYRIGHT Environment Agency copyright and/or database right. COPYRIGHT Crown copyright and database rights 2026.
 COPYRIGHT Hampshire Biodiversity Information Centre copyright. Contains Hampshire Biodiversity Information Centre data.
 COPYRIGHT National Grid copyright. Contains National Grid data.
 COPYRIGHT Based upon Data provided by the British Geological Survey © UKRI. All rights reserved.

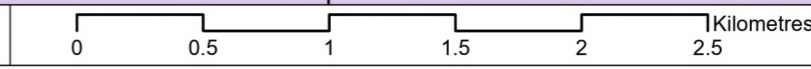
PROJECT TITLE
Hampshire Water Transfer and Water Recycling Project

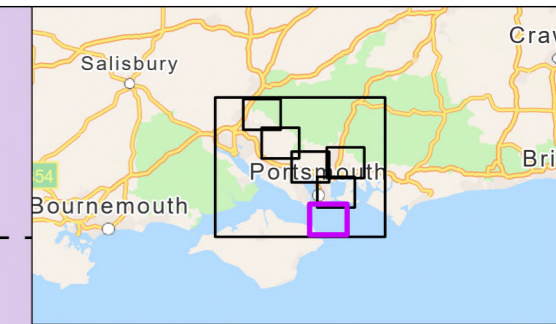
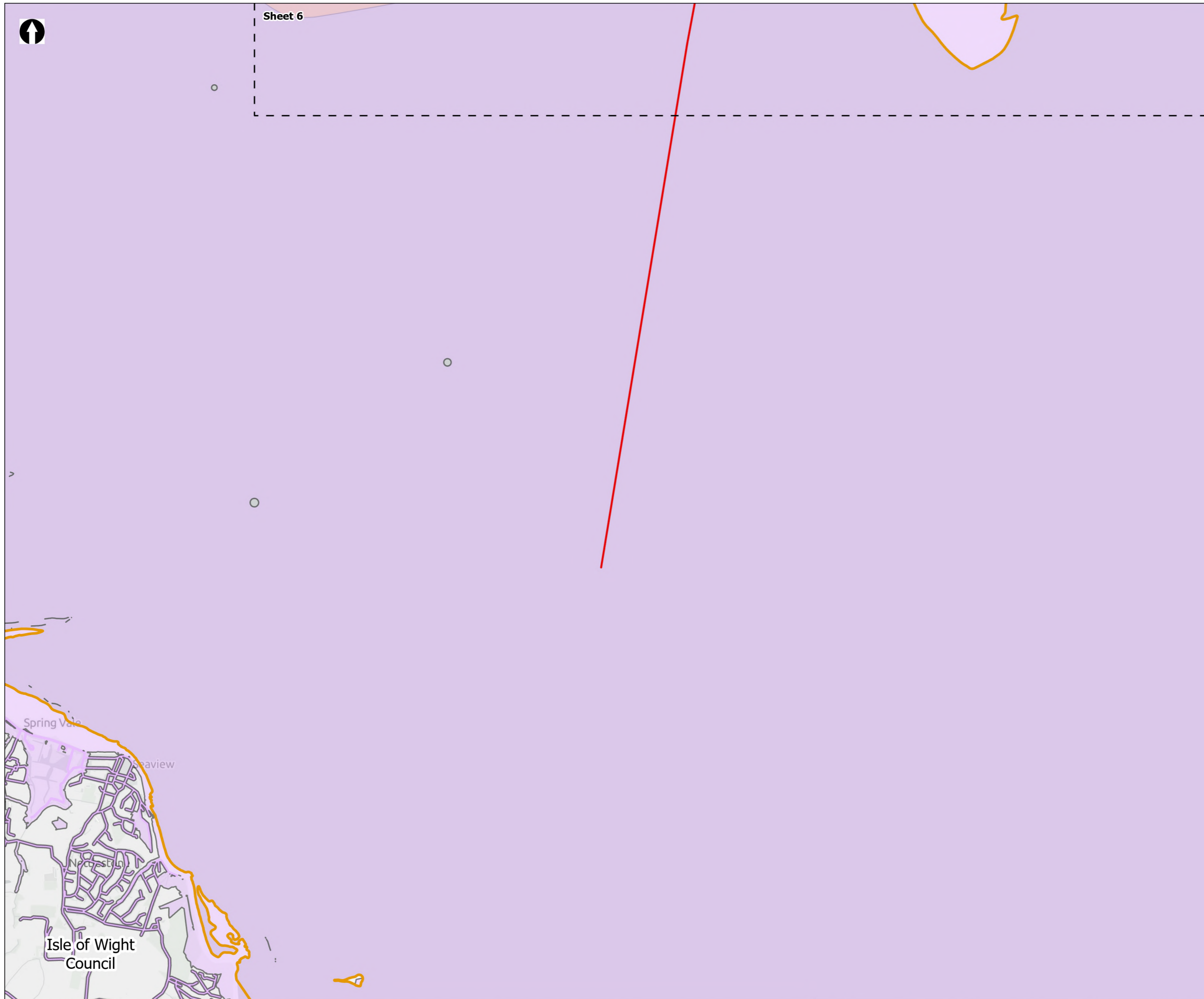


Figure 16.2
Mineral constraints
 Sheet 6 of 7

Drawn DL	GIS Checked MW	Checked MP	Approved AK
Scale at A3 1:30,000	Status Final	Revision 05	Security STD

Drawing Number
PC5223-RHD-ES-ZZ-D-Z-0016





- Order Limits
 - Sheet Extent Boxes 1:30K
 - Local planning authorities
 - Adopted Highways
 - Constraints for Minerals Extraction¹
 - Superficial Sand and Gravel MSA
- Hampshire Minerals and Waste Plan Minerals and Waste Safeguarded Areas and Safeguarded Sites**

The HMWP MCAs comprise safeguarded mineral resources, allocated minerals and waste sites and safeguarded minerals and waste infrastructure. The HMWP applies a 250m buffer around safeguarded mineral resources and minerals and waste infrastructure in rural areas. A 100m buffer is applied around to minerals and waste infrastructure in urban areas (and including areas directly opposite sites where the sites are adjacent to a water body).

¹Constraints for Minerals Extraction is made up of a combination of the following data from Natural England, Environment Agency, Hampshire Biodiversity Information Centre, the National Grid and Ordnance Survey: Ancient Woodland, and Southern Water: Ancient Woodland, Flood Zone 2, Flood Zone 3, Ramsar Site, Special Protection Area, National Nature Reserve, Sites of Special Scientific Interest, Local Nature Reserve, Areas of Outstanding Natural Beauty, Priority Habitat Inventory, National Parks, Portsmouth Net Water Pipelines, Portsmouth Water Raw Waste Pipelines, Southern Water Clean Pipelines, Southern Water Water Pipelines, National Grid Overhead Cables, National Grid Underground Cables, National Grid Gas Pipelines, Water Courses, Railways

Coordinate system: British National Grid; Datum: OSGB 1936
 Data sources: Sources: Esri, TomTom, Garmin, FAO, NOAA, USGS, © OpenStreetMap contributors, and the GIS User Community, Contains OS data © Crown Copyright and database right 2025, Contains data from OS Zoomstack, Data sources: © Crown copyright and database rights 2026 Ordnance Survey 01000:1673.
 COPYRIGHT Natural England copyright. Contains Ordnance Survey data COPYRIGHT Crown copyright and database right 2026.
 COPYRIGHT Environment Agency copyright and/or database right. COPYRIGHT Crown copyright and database rights 2026.
 COPYRIGHT Hampshire Biodiversity Information Centre copyright. Contains Hampshire Biodiversity Information Centre data.
 COPYRIGHT National Grid copyright. Contains National Grid data.
 COPYRIGHT Based upon Data provided by the British Geological Survey © UKRI. All rights reserved.

PROJECT TITLE
Hampshire Water Transfer and Water Recycling Project



Figure 16.2
Mineral constraints
Sheet 7 of 7

Drawn DL	GIS Checked MW	Checked MP	Approved AK
Scale at A3 1:30,000	Status Final	Revision 05	Security STD

